



GIVE
WHERE
YOU LIVE
FOUNDATION

IMPACT REPORT

2022-2023

ACKNOWLEDGEMENT OF COUNTRY

THE GIVE WHERE YOU LIVE FOUNDATION ACKNOWLEDGES THE TRADITIONAL OWNERS AND CUSTODIANS OF COUNTRY THROUGHOUT AUSTRALIA. WE RECOGNISE THE LOSS OF LANDS AND CULTURE, KNOWING THE CONSEQUENCES FOR PEOPLE, COMMUNITIES AND NATIONS. WE PAY OUR RESPECT TO FIRST NATIONS ELDERS BOTH PAST AND PRESENT, AND ACKNOWLEDGE THAT SOVEREIGNTY OVER THESE LANDS AND WATERS HAS NEVER BEEN CEDED.



Photo: Jane Fitzgerald Photography



**GIVE WHERE
YOU LIVE** FOUNDATION

OUR COVER

Jez at 'The Paddock'

Photo: Jane Fitzgerald Photography

Contents

ABOUT US

OUR MESSAGE

MESSAGE FROM THE CEO & CHAIRPERSON

2022 - 2023 SNAPSHOT OF OUR IMPACT

OUR STRATEGIC GOALS

OUR IMPACT: CATALYSING NEW INITIATIVES

THE Paddock

CONVERSATIONS THAT MATTER

GEELONG ZERO PROJECT

MICRO GRANTS

OUR IMPACT: FEED GEELONG

COMMUNITY CHOICE

FEED GEELONG APPEAL 2022

OUR IMPACT: GROW

A JOB IS LIFE CHANGING, AND EVERYONE
DESERVES A CHANCE

OUR IMPACT: GRANT FUNDING

PITCH UP GEELONG

SURVIVE & THRIVE FUNDING

EDUCATION & EMPLOYMENT FUNDING

PARTNERSHIP IMPACT FUND

IMPACT ENABLERS

FUNDRAISING & COMMUNICATIONS

VOLUNTEERS & HONOUR ROLL

THANK YOU

OUR SUPPORTERS

GOVERNANCE

OUR BOARD

OUR TEAM

FINANCIAL REPORTS 2022-2023

WE EXIST TO CREATE A FAIRER G21 COMMUNITY

GIVE WHERE YOU LIVE FOUNDATION

About Us

THE GIVE WHERE YOU LIVE FOUNDATION EXISTS TO CREATE A FAIRER COMMUNITY ACROSS THE G21 REGION.

Since 1954 the Give Where You Live Foundation has worked to assist people experiencing crisis, promote food security and improve education and employment opportunities across the G21 region.

The **2022 - 2023 financial year** saw the Give Where You Live Foundation invest over **\$2.6 million** into the Geelong community.

The Foundation knows that the current systems in our community do not serve everyone. To create change within our community we need to think and work differently.

In line with our 2030 Strategy, over the past year the Foundation has continued to evolve with changing community conditions and expectations.

Our ambition is to build our own 'eco-system of activities for change' that do not limit us to specific roles but see us use all of our resources to undertake a wide range of activities that help catalyse positive social change.

While the Foundation has continued to invest \$1.5 million in funding through grants to the community, we have also continued to increase investment in delivering our own change initiatives.

These programs include our GROW initiative, Feed Geelong, the Community Choice voucher program and our latest initiative, The Paddock.

It is through this work that we will ensure greater equity of opportunity in our community so that all people and places thrive.

Supporting the community and creating change now, rather than building capital for the future is central to everything we do.

The Give Where You Live Foundation is a community foundation with a difference.

Who do we want to be?

The Give Where You Live Foundation aims to be recognised as one of the most progressive foundations in Australia. This vision governs our thoughts, our strategies and our actions. This vision enshrines that:

- We will continue to strive for change.
- We will aim to continuously learn and improve.
- We will not just accept the status quo.
- We will question and act with curiosity.
- We will take risks.
- We will continue to be contemporary and maintain relevance.

What will we do?

Use all our energy and resources, in partnership with the community, so that all people and all places thrive.



The current systems in our community do not serve everyone. To create change within our community we need to think and work differently.



OUR MESSAGE

ACROSS THE G21 REGION WE CONTINUE TO SEE GROWING DISPARITY AND INEQUITY ACROSS THE COMMUNITY. THE GIVE WHERE YOU LIVE FOUNDATION IS WORKING TOWARDS A FUTURE FOR OUR REGION WHERE EQUITY IS THE NEW NORMAL. A FUTURE WITHOUT BARRIERS TO EDUCATION, EMPLOYMENT, HOUSING OR FOOD. A FUTURE THAT EMBRACES CHANGE AND CHALLENGES EQUITY.

Message from the CEO & Chairperson



Col Duthie
Board Chair



Bill Mithen
Chief Executive Officer

It has been another year of a lot of hard work, and one that we have actively pursued our strategy goals. This included launching a new series of events, Conversations that Matter. These events have allowed us to highlight issues and hold space while we have challenged the community to have a discussion that may be uncomfortable but necessary.

We also retained a vital asset in community ownership through our purchase of The Paddock at Leopold. We aim to create and operate a social business that also creates a place of connection and empathy, and one where we experiment with ownership models, and different economic activity.

We have also continued all our fundraising events, issued \$1.5M of grants, continued to develop our Community Choice program, further developed our work with Geelong Zero, designed, developed and are now implementing a never before tried social procurement model on the Nyaal Banyul (Geelong Convention and Event Centre) project and undergone significant organisational growth through the Social Impact Leadership Australia Program.

However, as we report on another busy year we have also been reflecting on how The Give Where You Live Foundation can create greater fairness and equity in our community?

Our community, like all, experiences the inequity that comes from systemic, procedural, legislative and institutional ways of operating that create, embed and galvanise it. Our social and economic systems maintain the status quo and enable those that benefit from inequity, that is those that don't experience it, to remain in that position. This means, in what is increasingly becoming a nil sum game, there is no room to build equity or fairness for those excluded from the economy most of us take for granted.

Structural inequity can be challenged by advocating for changes in laws and processes, altering institutional rules and adding mechanisms like taxes, quotas, levies and policies. These can be understood as the technical solutions to the technical part of the problem. This is where most funding and effort gets directed.

However, we think fairness will never be built and embedded into our communities and societies until our attitudes and beliefs about, and towards, each other are challenged and changed. This can be described as the adaptive challenge. Until we invest time, effort and resources into the

adaptive solutions, we will continue to hold back communities from truly becoming inclusive, regenerative and equitable.

Our thesis is that the key to addressing this adaptive challenge is connection. Connection to people and place. If communities build that connection they will value difference not just accept it, they will build empathy with those that are different and attempt to understand them, they build support structures that help lift those around them rather than playing the nil sum game of winning. They will create social, economic and environmental value that will be shared broadly.

The Give Where You Live Foundation wants to build and shape our community so that fairness is a central tenet. To do this we want to work to address both structural and adaptive inequity, and where possible build solutions that integrate across this great divide. The newer initiatives that we are working on intentionally have both 'technical' and 'adaptive' dimensions. Community Choice and The Paddock are two examples where alongside the visible 'program', they are designed to create connections across the community in ways that otherwise may not happen.

Our ongoing and future work will be to build and support systems that address the urgent needs of people where inequity is consigning them to lives of poverty and disadvantage. We want to continue to support and undertake work in food insecurity, homelessness, pathways to education and inclusive employment. This work can be at a local organisation or program level supporting work that addresses immediate need and challenges.

However, we increasingly see that our work must also be at a systems level, attempting to catalyse a change in a bigger system that feeds inequity. Our role to convene, connect advocate and understand broader systems is critical in building fairness in the community.

What is critically important is how we work at an adaptive level. Building connection within communities, between people to create empathy and understanding is often the foundational work that needs to be done before any technical or structural solutions can be attempted.

Creating places where people connect with each other and building hubs of community activity is a critical starting point. These places should aim to change the neighbourhood economics of places and build broad and enduring financial security for people.

During COVID we talked about 'building back better' – but have we? Economic systems have bounced back to what they were, we don't seem to value the care or education industries any more highly and the connection we craved and knew to be the basis of how 'we would get through this together' seems to have dissolved.

The Give Where You Live Foundation wants to hold on to the notion of 'building back better'. We want to help create places for communities to connect and build empathy. We want communities to use that connection and empathy to interrogate how societal and economic systems need to change, while we support the urgent needs of those people who are not being served by those existing systems.

We think that is how you build fairness.

Thank you to everyone who has supported and continue to support our work. We are privileged to be given the trust of the community. Thank you also to our teams. First the Board who have provided us with support and guidance throughout and to the staff team. Their expertise, determination, passion for the community and commitment are unmatched.

2022 - 2023 Snapshot of our impact

THE 2022-2023 FINANCIAL YEAR SAW THE GIVE WHERE YOU LIVE FOUNDATION INVEST OVER \$2.6 MILLION DOLLARS INTO THE GEELONG COMMUNITY.

THE IMPACT



\$2.6 Million

into the Geelong community



\$1.5 MILLION

in grant funding



60 GRANTS

to 47 community partner organisations



5,359 COMMUNITY

Choice food and pharmacy vouchers distributed



140 GROW

employment outcomes



24,904 PEOPLE

and their families supported to access food, pharmacy & material aid.



\$3.27M GROW

Signatory spend with local social benefit suppliers



1,404 YOUNG PEOPLE

disengaged or at risk of disengaging supported to re-engage in learning



280K RAISED

from four Fundraising Appeals



200 VOLUNTEERS

participated in the Community Grant Review Panels



1068 PEOPLE

attended Conversations That Matter events



“With the cost of living rising and we are seeing more and more diverse people coming through our doors, that we haven’t seen before, that are now struggling. The people that come through our doors are new and ever emerging every day.”

- Amy Flint
Outpost Vice President

Our strategic goals

THE STRATEGIC GOALS OF THE GIVE WHERE YOU LIVE FOUNDATION, PROVIDE A ROAD MAP TO ACHIEVING OUR VISION OF BECOMING ONE OF THE MOST PROGRESSIVE FOUNDATIONS IN AUSTRALIA.

Achieving these goals will help to bridge the gaps in our region and create a fairer and more inclusive community for all.

We’ve identified four key strategy goals that will shape our organisation and how we help to shape our community.

The chart below shows how we’ve advanced towards creating a more inclusive community over the past 12 months, against our four 2030 Strategic Goals.



BECOME A MORE INCLUSIVE COMMUNITY				
OUR CHANGE INITIATIVES	GOAL 1 CATALYSE SYSTEMS CHANGE	GOAL 2 BUILD COMMUNITY ASSETS	GOAL 3 INCUBATE INNOVATION	GOAL 4 DATA RESEARCH, EVALUATION, ADVOCACY
Grants	✓	✓	✓	-
GROW	✓	✓	-	✓
Community Choice	✓	-	✓	✓
Feed Geelong	-	✓	-	✓
The Paddock	✓	✓	-	-
Conversations That Matter	-	-	-	✓
Geelong Zero	-	✓	-	✓
Micro Grants	-	✓	-	-

OUR IMPACT: CATALYSING NEW INITIATIVES

CATALYSING NEW INITIATIVES

The Paddock

In April 2023, the Foundation purchased The Paddock, retaining the seven-acre farm as a community asset from previous owners Encompass Community Services.

This latest initiative aligns strongly with the Foundation's goal to build community assets and our ultimate vision of creating a fairer and more inclusive community for all.

The Paddock had been a much loved community asset for over 15 years, with the property providing a unique place of connection, inclusion and somewhere for people of all abilities to explore new experiences and learn new skills.

Since taking over The Paddock, those who were previously accessing the property through Encompass, have been able to reconnect and recommence their daily activities there.

The Foundation is continuing to plan for the long term future of The Paddock including exploring how the community's connection to the new asset can be broadened.

THE DIFFERENCE WE'VE MADE:

Reconnecting to The Paddock

Jez has been a part of The Paddock for almost eight years and was able to reconnect to the property following the purchase by the Foundation.

Jez's mum MaRiann, shares that after having The Paddock part of his life for so long, the unexpected closure had a huge impact on both of them.

"So much had been gained over the years for Jez from what the farm had offered him; skills, self development and friendships."

She says that the re-opening of The Paddock has been a blessing.

"We are so grateful to the Give Where You Live Foundation. Jez and all the other participants and staff now have the opportunity to continue to work and grow the farm that they are so passionate about."

"Through the new vision that the Foundation has for the farm, Jez will be able to further develop farming, horticultural and social skills. Through the belief and support the farm offers, there will be personal growth every day."

“

**This beautiful
and inspirational
farm is 'HOPE'
for so many.”**

- MaRiann Dalli, Jez's mother



Photo: Jane Fitzgerald Photography

CATALYSING NEW INITIATIVES

Conversations That Matter

Our aim is to elevate voices and have conversations about issues that matter to our community.

In 2022 the Give Where You Live Foundation launched Conversations That Matter, a new initiative that is part of the Foundation's commitment to raising important issues, giving people a voice and helping to create positive change.

In line with the Foundation's mission to help create an equitable, fairer G21 region where all people and places thrive, Conversations That Matter aims to bring to light the realities facing everyday people across our region.

"We know change occurs when people have a voice. Grace Tame has shown how a conversation can turn into action." Bill Mithen said.

Conversations That Matter was presented by GeelongPort and supported by a number of other key partners.



The more we give voice to people with lived experience, the more positive change we can make.

- Bill Mithen.

Grace Tame - August 2022

Over 600 people attended the first Conversations That Matter event launched by 2021 Australian of the Year, Grace Tame.

Grace spoke from the heart about how she turned her traumatic experience into advocacy for survivors of child sexual assault and became a leader for positive change.

Grace shared the important message that we need to hear more from people who don't always have a platform.

The event was hosted by writer Nelly Thomas and featured a special performance of "No Means No" by Give Where You Live Foundation community partner, Somebody's Daughter Theatre Company.



Photo: Jane Fitzgerald Photography

Nova Peris, Reconciliation - May 2023

Held during 2023 Reconciliation Week, the Foundation's second Conversations That Matter event encouraged the community to sit and listen deeply to the voices of First Nations people.

Almost 500 people attended to hear guest speaker Nova Peris, and other local First Nations guests including Wadawurrung Traditional Owner Corrina Eccles and Wathaurong CEO Simon Flagg share their personal stories.

A group of local First Nations people including Gundjitmara man Tom Molyneux, Wakaya woman Bek Lasky, Larrakia man Matt Stokes, and Adnyamathanha woman Marsha Uppill joined MC Allira Potter for a Yarn about their stories and family histories as well as their recent experiences of being First Nations people in Djilang.



You don't lose your 250 years of history when you acknowledge ours, you gain 50,000 years of history.

- Nova Peris

CATALYSING NEW INITIATIVES

Geelong Zero Project



Geelong Zero brings local organisations together to reduce homelessness in the Geelong region and end rough sleeping by 2025.

This year the Give Where You Live Foundation was proud to announce a new strategic partnership supporting the launch of the Geelong Zero project to help reduce homelessness and end rough sleeping in Geelong by 2025.

The partnership with Neami National, who is leading the Geelong Zero project brings together local community organisations to provide outreach to people sleeping rough within the Geelong area and clearly identify their needs.

The Geelong Zero project officially launched during the project's Community Connections Week held from 10-14 October 2022. During this week, volunteers worked alongside the partnering organisations to provide assertive outreach to people sleeping rough within the Geelong area. Following this week, the first Geelong Zero By Name list was created along with extensive insights into homelessness in our community.

The first Geelong Zero rough sleeping census revealed key data:



76% disclosed experience of physical abuse or harm while experiencing homelessness



5.96 average number of years sleeping on the streets or in emergency accommodation.



5.17 average number of years since last stable housing (with a tenancy)



80% are experiencing chronic health issues

What you're doing, keep doing it. This is so badly needed. Thank you.

- Male rough sleeper during Connections Week



CATALYSING NEW INITIATIVES

Micro Grants

Over the past year the Foundation trialled a new way of funding, through distributing 24 micro grants. Totalling \$120,000 these micro grants enabled the Foundation to respond to the needs of the community and provide small funding amounts at key points throughout the year.

In late 2022, funding to OneCare Geelong and The Outpost enabled the two organisations to do even more for those in our community doing it tough during the Christmas period. In knowing that other services would be closed over the Christmas period, The Outpost handed out food hampers on Christmas day, which included essential food and sanitary supplies to assist those who may have access to only dinner during that time.

To help support families struggling with back to school and education costs, in early 2023 funding to Uniting Vic and MacKillop Family Services supported young students to purchase essential items such as uniforms, text books and other school fees.

24
Micro grants funded

\$120K
invested across these grants

1,190
people supported to access food relief, material aid and support mental health and social isolation

THE DIFFERENCE WE'VE MADE:



Ocean Mind Surf Therapy Carnival

With funding through the Foundation's micro grants, Ocean Mind held their first Surf Therapy Carnival in April at Anglesea beach. Over 30 young people and 25 volunteers came together at the first event which was a chance to experience the joy of surfing and build resilience and wellbeing.

The Ocean Mind crew gave a big wave of thanks to the Foundation for funding the event saying "this support made the day possible and helped us to provide an incredible day of surfing, fun and positivity for the young people who attended."



Helping OneCare Geelong spread Christmas joy

Funding from these grants supported OneCare Geelong to deliver a number of Christmas activities to support people in need.

This included distributing 120 gift boxes to OneCare participants filled with special Christmas items including a leg of ham, Christmas cake and treats, a Christmas card and voucher for a family outing.

They also held a community Christmas lunch for approximately 120 people to enjoy a day of celebration and fun with a delicious home cooked Christmas meal, carols and games. For many of the people who attended this would be the only Christmas celebration they would have.



We're very, very proud parents on the beach at the moment.

- Ocean Mind participant parent
Image - Ocean Mind



OUR IMPACT: FEED GEELONG

THE FOUNDATION HAS INVESTED IN THE FOOD RELIEF SECTOR SINCE OUR INCEPTION IN 1954. FEED GEELONG EXISTS TO ADDRESS FOOD INSECURITY WITHIN THE G21 REGION.

HELPING MAKE SURE NOBODY IN OUR COMMUNITY GOES HUNGRY

**FEED
GEELONG**



Fighting
hunger in your
community

Community Choice

The Foundation's Community Choice voucher program aims to create greater choice, diversity, and access to emergency assistance for members of our community who are experiencing food insecurity.

Community Choice gives people in our community access to essentials including food, prescription medication and material aid which includes household items and furniture.

Over the past year, the Foundation continued to experience increased demand from community partner agencies seeking additional vouchers to distribute to those most in need in the community. In response, the Foundation this year invested additional funds into its Community Choice program, distributing \$176,483 to over 22 local community agencies to further support people in crisis.

In addition, to offer more choice and dignity to those accessing Community Choice, over the year the Foundation worked to further expand the number of merchants where the vouchers can be redeemed. This includes the first food merchant that is open 24 hours giving the community access to food relief all day, every day of the year.

Community Choice is supported in part thanks to funding from The Percy Baxter Foundation.

IMPACT OVER THE PAST YEAR:



\$176,483
invested



5,359
food and pharmacy
vouchers distributed



24,904
people and their
families assisted
to access food,
pharmacy and
material aid



22
local community
agencies
distributing
vouchers



28
local businesses who
exchange vouchers for
either food, pharmacy
or material aid

WHO COMMUNITY CHOICE SUPPORTED



67%
were female



54%
have sought assistance due to
them being on Government
benefits not keeping up with
the increased cost of living.



22%
were single
parents



19%
were people with
a disability.



15%
had health issue
or experiencing
bereavement

HELPING MAKE SURE NOBODY IN OUR COMMUNITY GOES HUNGRY

Feed Geelong Appeal

2022 Feed Geelong Appeal

Over \$200,000 of the Foundation's 2023 Survive & Thrive grant funding was directed towards supporting food insecurity across the region, in part as a result of public donations received in the Foundation's 2022 Feed Geelong Appeal.

The 2022 Feed Geelong Appeal raised \$82,027 to help fight hunger in the Geelong community.



\$82K

Raised from 2022
Feed Geelong Appeal



Feed Geelong Appeal Ambassador

The Foundation was thrilled to have MasterChef's Simon Toohey, who moved to Geelong earlier this year as the 2022 Feed Geelong Appeal Ambassador, encouraging the community to support the Appeal.

"I've always loved food and it's heartbreaking to know that many people in our local community are going without food. That's why I've partnered with the Give Where You Live Foundation to help raise money for their 2022 Feed Geelong Appeal," Simon Toohey said.



I want to help make sure nobody in our community goes hungry.

- Simon Toohey, S11 & S12 Masterchef
2022 Feed Geelong Appeal
Ambassador

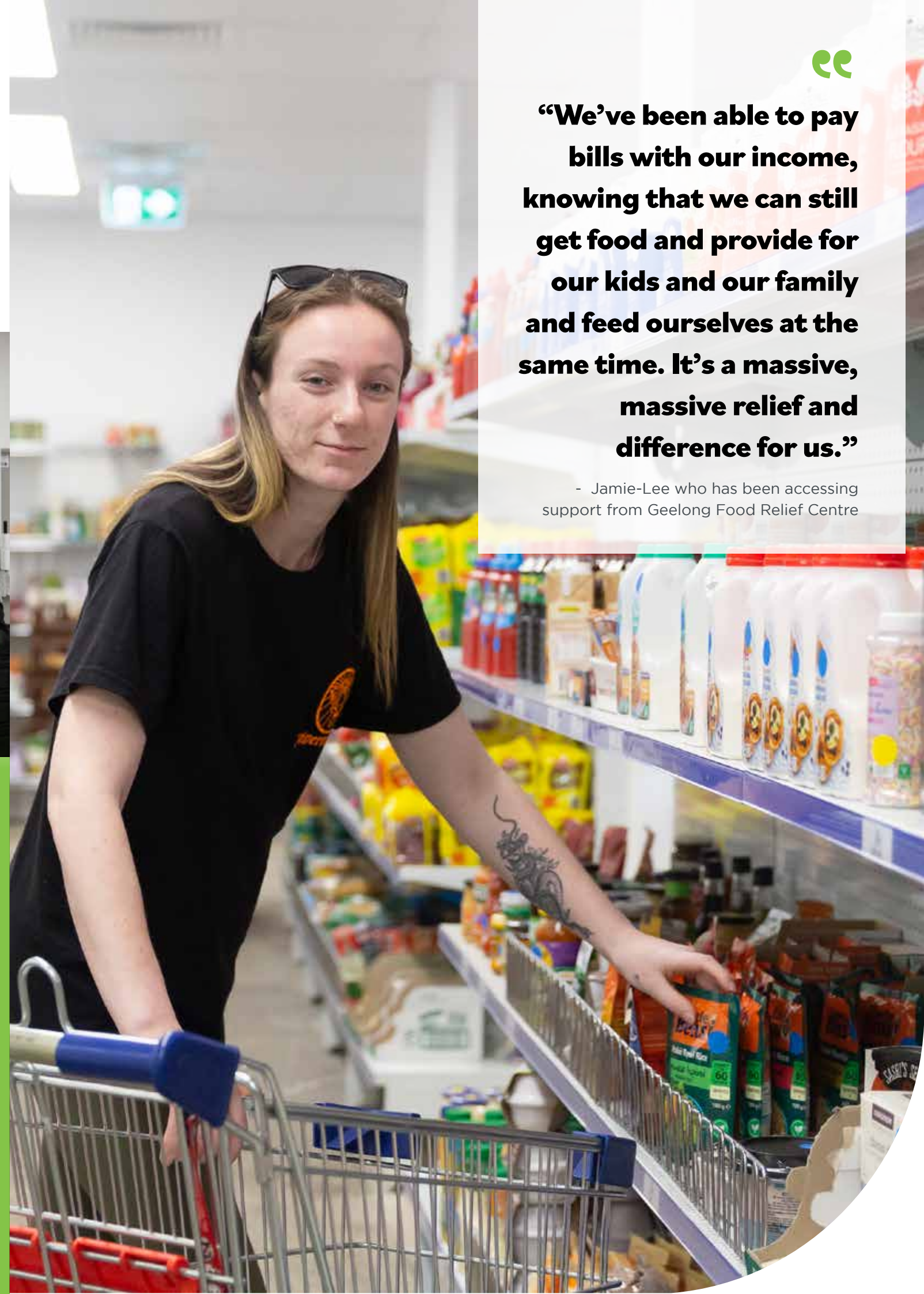


THE DIFFERENCE WE'VE MADE:

For people going hungry in our community

A man came in with his autistic son. His marriage had broken up and he and the son were kicked out of the house. He had managed to acquire a unit but as the bond was expensive, he couldn't afford food. I then offered him Community Choice vouchers and he was so appreciative. Now they both come in once a month and donate food they have purchased from Coles." - Geelong Food Relief Centre

"Recently one of The Outpost clients came in and advised that they had received a food voucher to a local cafe. She said being able to go in and grab a coffee and a meal was a luxury that immediately made her feel like a 'regular person doing regular stuff'. - The Outpost



"We've been able to pay bills with our income, knowing that we can still get food and provide for our kids and our family and feed ourselves at the same time. It's a massive, massive relief and difference for us."

- Jamie-Lee who has been accessing support from Geelong Food Relief Centre

OUR IMPACT: GROW

G21 REGION OPPORTUNITIES FOR WORK

THE GIVE WHERE YOU LIVE FOUNDATION'S GROW INITIATIVE BRINGS BUSINESSES, COMMUNITY ORGANISATIONS, TRAINING AND EMPLOYMENT SERVICE PROVIDERS AND GOVERNMENT TOGETHER, TO ADDRESS ENTRENCHED DISADVANTAGE IN OUR REGION, THROUGH SUPPORTING INCLUSIVE EMPLOYMENT PRACTICES AND DIRECTING SPEND TO LOCAL SOCIAL BENEFIT SUPPLIERS

SUPPORTING INCLUSIVE EMPLOYMENT & SOCIAL BENEFIT SPEND

GROW

GROW aims to change the outlook for areas of high unemployment in the G21 region.

The Foundation's GROW initiative looks to change the way we buy and employ locally, to support local businesses and help create equitable and sustainable jobs.

GROW is made up of businesses, government and community organisations working together to change the outlook for areas of high unemployment, including Norlane, Corio, Whittington and parts of Colac.

The joint efforts of GROW will enable us to grow a stronger G21 economy through creating more job opportunities for long term job seekers who are missing out because of lack of support, networks, training, transport and experience, and who face individual and systemic barriers to employment.

GROW is the Geelong region's local, trusted, social procurement intermediary, delivering social impact for our region, including through major project's occurring in our community. By leveraging the spending power of businesses through social procurement we can collectively ensure that economic benefits flow more equitably across our region so that all people and places thrive.

Djilang Alliance Project

In 2022 the Djilang Alliance (a joint venture between Downer, McConnell Dowell, Arup and WSP) was awarded the contract to deliver the South Geelong to Waurin Ponds rail project.

Following this, a Djilang Alliance Project group was established to pilot the Jobs Victoria funded GROW Social Procurement Model. The model is being delivered in partnership with gforce, as the Group Training Organisation and the Djilang Alliance, as the lead contractor on the major project.

Through tracking and monitoring the Foundation has developed an understanding of how the model can improve outcomes on major projects, for people who face individual and systemic barriers to employment in the G21 region. The project team learned from the trial and adapted and improved the model for use on the upcoming Nyaal Banyul Geelong Convention and Event Centre.

In addition, the GROW initiative also successfully advocated and bought together Jobs Victoria and the Djilang Alliance, leveraging Victorian Government funding and a major project opportunity, to secure a grant and an opportunity for gforce employment + recruitment to trial aspects of an innovative new inclusive employment model via the Djilang Alliance Project.



140

Employment outcomes



48

Individualised Employment Pathways and Workplace Practices



\$3.27M

GROW Signatory spend with local social benefit suppliers



Nyaal Banyul to deliver social and economic benefits for our region

As planning continued for the development of Nyaal Banyul (Geelong Convention and Event Centre), over the past year the GROW initiative has worked closely with Development Victoria, the project team at Rural and Regional Victoria and gforce employment + recruitment to ensure lasting social and economic benefits for the region beyond the centre itself.

During the tender phase, GROW developed a new inclusive employment model and ambitious inclusive employment and social procurement targets, which were included in the construction tender opportunity and contract for the two-year build and the 25-year facilities management phases.

This work will help to ensure long lasting social and economic benefits for our region.

THE DIFFERENCE WE'VE MADE:

A job is life changing, and everyone deserves a chance

THE GIVE WHERE YOU LIVE FOUNDATION'S GROW INITIATIVE ASSISTS IN LINKING AND CONNECTING BUSINESSES AND COMMUNITY ORGANISATIONS THAT CREATE EMPLOYMENT OPPORTUNITIES FOR PEOPLE EXPERIENCING LONG TERM UNEMPLOYMENT AND OTHER BARRIERS TO EMPLOYMENT.

Ella's story

Supported by GROW, Ella Partington, now an adult apprentice has broken barriers and forged a pathway through a Certificate II in Construction Management. She is a great advertisement for the impact of inclusive recruitment practices.

Ella, a Corio resident living with a disability, was a student at Nelson Park School when she was recruited into a pre-employment program, with the help of GROW. With support from a disability support worker, and a Program Mentor, Ella showed great dedication and commitment. Her supervisors report she did not miss a day during the Certificate II in Construction Pathways, including a work placement at Hanlon Industries.

With her unwavering commitment,

and support from GROW she has now commenced work at Hanlon Industries as an apprentice in her chosen field of boilermaking. This life changing employment opportunity sees Ella thriving in the work environment and loving the chance to learn new skills.

"At school I found I liked hands on learning and doing practical things. So, it made sense to try and include that in my work. My new job means I can explore different pathways in engineering fabrication and I'm pretty excited about that." Ella said.

"My future looks promising. I hope to continue working at Hanlon Industries when I finish my apprenticeship. Working here has helped me and it's really good."

John Demopoulos, from Nelson Park

School where Ella was a student said, "Ella was able to leave Nelson Park and take up a full time apprenticeship. We are absolutely proud of her achievements in securing a great opportunity and pathway for the future."

GROW signatory, Hanlon Industries is committed to prioritising job seekers and providing people with opportunities to secure work placements and apprenticeships. Dean Talbot, Head of People and Growth from Hanlon Industries said, "We were proud to recruit Ella as an apprentice. Her inspiring journey is a great example of the impact of inclusive recruitment practices and she has infused our trade-specific team with fresh perspectives, enhanced skills, and a renewed sense of purpose."



"My future looks promising. I hope to continue working at Hanlon Industries when I finish my apprenticeship. Working here has helped me and it's really good."

- Ella



"We were proud to recruit Ella as an apprentice. Her inspiring journey is a great example of the impact of inclusive recruitment practices and she has infused our trade-specific team with fresh perspectives, enhanced skills, and a renewed sense of purpose."

- Dean Talbot, Head of People and Growth from Hanlon Industries



OUR IMPACT: GRANT FUNDING

OVER THE PAST YEAR THE GIVE WHERE YOU LIVE FOUNDATION HAS PROVIDED \$1.5 MILLION IN GRANT FUNDING TO SUPPORT OUR COMMUNITY.

THE DIFFERENCE WE'VE MADE:

Pitch Up Geelong

Pitch Up is the Foundation's live crowd funding event that supports connection between local community partners and donors. It also creates an opportunity to raise awareness of critical issues impacting our community.

In 2022 Hope Bereavement Care raised over \$36,000 at Pitch Up Geelong to extend their Kids Grieve Too Plus (KGT+) program. This program provides grief support to children and young people experiencing the loss of a loved one, including bereavement by suicide, as well as supporting family and professionals in the wider community who are caring for them.

Thanks to funding from Pitch Up, Hope Bereavement Care was able to meet the increasing demand for their KGT+ program through increasing staff hours to deliver individual, family, sibling and small peer group creative bereavement sessions as well as group activities.

Through this work, Hope Bereavement Care was able to:

- **Support 48 young people to increase their capacity and coping strategies.**
- **Support 48 young people to reduce social isolation.**
- **Provide three creative bereavement groups for 21 bereaved young people.**
- **Provide 22 creative art sessions to 16 individual young people as a part of their counselling.**

The creative bereavement sessions provided a safe space to experiment with coping strategies and learn new ways of managing grief-related challenges. Creating art in memory of the deceased can be a meaningful way for bereaved individuals to honour and remember their loved one.

Through the project, Hope Bereavement Care also found that connecting bereaved young people to each other had various positive outcomes. Engaging in creative bereavement sessions created a supportive and non-judgemental environment.

In the words of one of Hope Bereavement Care's clients:

"Art gave me a voice when I couldn't find the right words to express the emptiness inside."



“

"I found a safe space to express my grief, where my pain was understood without words."

- Hope Bereavement Care Client

"Connecting with others who experienced loss helped me realise I'm not alone in my journey, and together we find strength to heal."

- Hope Bereavement Care Client



48

young people supported to increase their capacity and coping strategies



48

young people supported to reduce social isolation



22

creative art sessions to 16 individual young people



GRANT FUNDING

Survive & Thrive funding

IN MAY 2023 THE FOUNDATION ANNOUNCED FUNDING FOR 15 ORGANISATIONS FROM ACROSS THE G21 REGION TOTTALLING OVER \$420,000 THROUGH THE 2023 SURVIVE & THRIVE GRANT ROUND.

The Foundation’s Survive and Thrive grants support people in our community who are experiencing life-inhibiting crisis by supporting their immediate basic needs and building resilience and community connection as well as prevention and early intervention efforts related to family violence, sexual assault, addiction, mental health and family breakdown.

15
Organisations funded

\$420K
invested across these organisations

IMPACT DATA
from Survive and Thrive Grants
concluding in 2023.

In 2022 we distributed over \$525,000 to 23 local organisations.

Here is a snapshot of the impact these grants have had in our community over the 2022 year.

51,941 Number of people supported to access food relief assistance and reduce food insecurity

12,373 Number of meals provided to support food relief and reduced food insecurity.

4,541 Number of people supported to increase capacity and coping strategies.

8,345 Number of people assisted with prevention and early intervention efforts related to family violence, sexual assault, addiction, mental health, and family breakdown.

469 Number of people supported to reduce social isolation

THE DIFFERENCE WE’VE MADE:

Having a roof over your head is a basic human need

Over the past two years Uniting Vic have received Survive & Thrive grants totalling \$80,000 from the Foundation.

A \$40,000 grant received in 2022, funded a Housing and Homelessness Worker during that year in the Barwon region to support people experiencing housing insecurity.

Almost 200 people who were at risk of homelessness were provided with information, advice, resources and supported to secure emergency accommodation, private rentals and short term accommodation at hostels, hotels and caravan parks.

Over the year Uniting Vic saw an increased number of people presenting as rough sleepers. They supported these people by providing them with a purpose built back pack equipped with basic essentials for living rough- a thermos flask, two man tent, solar light, sleeping bag, blankets and warm clothes. They were also provided with vouchers for food and petrol and linked with other service providers for additional support.

In May 2023 the Foundation provided Uniting Vic with another \$40,000 of funding to enable them to pilot a mobile emergency relief service for the Barwon region. The mobile service will provide food relief, material aid, and act as a gateway to other support services.

SUSANA’S STORY

Susana* sought support from Uniting Vic after fleeing family violence with her two children. Uniting’s housing and homelessness service supported Susana with two nights of emergency accommodation to safely accommodate her and her children until they were able to access a private rental property. In addition, they referred her to Geelong Mums as well as provided her with food in kind, toiletry pack, and a Foodbank voucher to give them a good start in setting up their new home.

*Not real name to protect privacy

Uniting



GRANT FUNDING

Education & Employment funding

IN NOVEMBER 2022 THE FOUNDATION ANNOUNCED FUNDING FOR 15 ORGANISATIONS FROM ACROSS THE G21 REGION TOTALLING OVER \$445,000 THROUGH THE 2022 EDUCATION & EMPLOYMENT GRANT ROUND.

The Foundation's Educations & Employment funding seeks to create increased learning opportunities, increased attainment of education, increased access to and readiness for quality employment, and increased retention of quality employment.



15

Organisations funded



\$445K

invested across these organisations

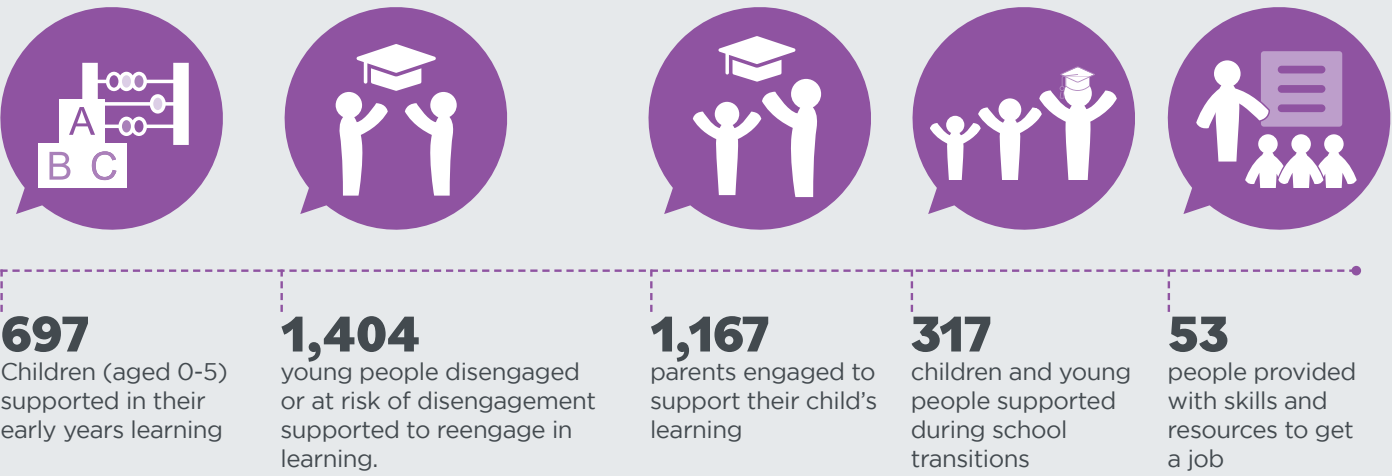
“Having a good education and quality employment, are important factors in supporting people to be successful and thrive. Unfortunately, there are still many people in our community who either don’t have access or have barriers to participation in education and employment.”

IMPACT DATA

from Education and Employment grants concluding in 2022.

In 2021 the Foundation distributed \$550,800 to 17 local organisations.

Here is a snapshot of the impact the 2021 Education and Employment grants had in our community over the past year.



THE DIFFERENCE WE'VE MADE:

Employment Opportunities for People with a Disability

Back to Back Theatre

IN NOVEMBER 2022, BACK TO BACK THEATRE RECEIVED A \$30,000 GRANT TO SUPPORT EXTENDED AND LONG TERM EMPLOYMENT OPPORTUNITIES FOR ARTISTS WHO IDENTIFY AS HAVING AN INTELLECTUAL DISABILITY AND/OR NEURODIVERSITY.

In 2023, so far this grant has enabled Back to Back Theatre to employ nine people with a disability/neurodiversity on short term contracts and they have plans to employ an additional three by the end of the year.

One of the people employed is Francesca Neri, a young woman who travelled with Back to Back to Seoul, South Korea to create THE DEMOCRATIC SET SEOUL in July. THE DEMOCRATIC SET is a screen based project where Back to Back work with a range of different communities to make a visual representation of their lives. When making this work, Back to Back have a person with an intellectual disability/ neurodiversity as Artist Mentor. Francesca was the Artist Mentor for Seoul.

Francesca shares...

“I have frequently travelled overseas with my family, but this was my first time travelling independently with Back to Back. As Artist Mentor, I welcomed the different people to the set, made sure they were comfortable and worked with the interpreter in letting them know what was happening. Sometimes, they were stuck for ideas to use in the SET and I assisted them with suggestions.”

I learned a lot. Working with people from different cultures allowed me to find out about them. I loved the process of putting them into the box. I was fortunate to travel back to Seoul with my family in October and was there for the premiere of THE DEMOCRATIC SET SEOUL. It was fantastic to show them what I have been working on and see it with the people of South Korea.”

Francesca is also currently the understudy for Back to Back’s touring show, THE SHADOW WHOSE PREY THE HUNTER BECOMES. Back to Back and Francesca will be looking for further opportunities to work with the company in the coming years.

Pictured Above: (left to right) Florence Gladwin, Bruce Gladwin, Tim Stitz, Rhian Hinkley, Sarah Kriegler, Francesca Neri

GRANT FUNDING

Partnership Impact Fund

THROUGH THE PARTNERSHIP IMPACT FUND, THE FOUNDATION SEEKS TO TAKE A DIFFERENT APPROACH TO FUNDING AND TO LEVERAGE OTHER SUPPORT AND RESOURCES TO HELP CREATE A FAIRER COMMUNITY.

Partnerships under this funding take a systems change approach to help understand and shift the underlying cause of inequality and inequity.

Over the last year, the Foundation expanded its investment through the Partnership Impact Fund, now working alongside Neami National to deliver the Geelong Zero Project, Wadawurrung Traditional Owners Aboriginal Corporation, Norlane Community Initiatives and the Geelong Food Relief Centre to support the Geelong Food Assistance Network.

THE DIFFERENCE WE'VE MADE:

Working together with Wadawurrung Traditional Owners Aboriginal Corporation

Through the Partnership Impact Fund, the Foundation have a three year partnership with Wadawurrung Traditional Owners Aboriginal Corporation to lead change in our community. Grants distributed through this fund are designed to support people to shape their own community and build social capital.

Over the past year Wadawurrung Traditional Owners Aboriginal Corporation have achieved the following:

Wadawurrung Language App

Wadawurrung Traditional Owners Aboriginal Corporation are progressing the development of their language resources. Over the last 12 months they have been working on a upgraded app that will be accessible on Android for the public and be an accessible app for a member only area to provide Cultural Knowledge and sharing. They have established a committee of Wadawurrung Traditional Owners to develop and guide the process of content.

A key goal for Wadawurrung outlined in their Paleert Tjaara Dja (Healthy Country Plan) is By 2022, our Wadawurrung Language app will be accessible for all mobile phones.'

Prior to receiving funding from the Foundation, Wadawurrung had been no budget to proceed with the development of this project. Once the project is completed Wadawurrung plan to continue developing the content so it can be used as an educational tool for the whole community.



\$220,000

INVESTED through the Partnership Impact Fund



Pilk Purriyn

On 26 January 2023, Wadawurrung presented the first 'Pilk Purriyn' truth telling event, that invites the community to come together to listen, reflect and understand the history of the First People of the land.

More than 2000 people - both First Nations and allies turned out to hear the truth-telling and witness the ceremony from Wadawurrung Elders and Leaders that morning.

With the support of funding from the Foundation, Wadawurrung Elders and Traditional Owners not living locally were able to attend the event and partake in ceremony of Welcome to Country, smoking, Dance and truth telling ceremony.

Victorian Elders Forum

Wadawurrung Elders were able to attend this years two day Statewide Elders Gathering in Melbourne, There were 10 Elders, to learn more about health and Elderly services. Staff were needed to assist Elders to attend. Elders were hugely grateful for Give Where You Live funding to be able to be part of this and also support Wadawurrung Traditional Owners Aboriginal Corporation who have established an Elders Council who meeting Monthly in Ballarat and Geelong.



A key goal for Wadawurrung outlined in their Paleert Tjaara Dja (Healthy Country Plan) is by 2022, our Wadawurrung Language app will be accessible for all mobile phones.





IMPACT ENABLERS

OUR IMPACT ENABLERS ENSURE OUR BUSINESS AS USUAL ACTIVITES REMAIN STRONG AND ALLOW US TO PURSUE OUR STRATEGIC GOALS

IMPACT ENABLER

Fundraising & Communications

FUNDRAISING AND EVENTS CONTINUE TO BE THE LIFEBLOOD OF THE GIVE WHERE YOU LIVE FOUNDATION'S REVENUE BASE.

Over the year the Foundation holds a number of exciting events and fundraising appeals for businesses, individuals and schools to get involved in to support their community.

Surf Coast Trek

Total raised: \$255,318

Number of registrations: 907

The 2023 Surf Coast Trek, organised in partnership with Kids+, was held on Saturday 13 May. Almost 500 walkers completed the longer Trek from Aireys Inlet to Torquay and over 300 completed the shorter 23km from Anglesea.

Thanks to a number of additional event sponsors and the development of a fundraising toolkit to support participants in their fundraising efforts, the event raised \$255,318.

2023 End of Financial Year Appeal

Total raised: \$118,236

Total number of donations: 121

The 2022 End of Financial Year Appeal again raised a record-breaking total of over \$118,000. This continued support from the Foundation's generous donors are helping the Foundation continue creating a fairer community.



\$118,236

RAISED through the
End of Financial Year Appeal

**The 31st Annual
Golf Classic held
at Curlewis Golf
Club raised over
\$85,000!**



IMPACT ENABLER

Volunteers & Honour Roll

The Foundation's operations rely on the generosity of hundreds of individuals who volunteer their time including our Board, Grant Review Panellists, Loaned Executives and those who assist in the delivery of our fundraising events.

Grant Review Panels

The Give Where You Live Foundation engages community members in our grant review process as part of an ongoing commitment to transparency, accountability and community involvement. This year a total of 200 community members reviewed funding applications across both our Education & Employment and Survive & Thrive grant rounds.

Our Community Grant Review Panellists represent all aspects of our community, and we thank everyone who volunteered their time and expertise to participate in one of our grant review panels over the past financial year.

Loaned Executive Program

During the 2022 - 2023 financial year Workplace Giving has accounted for approximately 12.5% of the Foundation's total income.

This would not be possible without the work of the volunteer Loaned Executive team who annually promote Workplace Giving throughout businesses across our region. The Foundation thanks members of the 2022 Loaned Executive Program from over 20 business who participated.

The 2022 Loaned Executives came from all walks of life and a diverse range of businesses from across the region. This includes many of the Foundation's long-term partners, such as Barwon Water, GMHBA, VIVA Energy and the Geelong Advertiser, as well as many joining the Loaned Executive program for the first time, including Lendlease, Arthur Street Digital, Higher Mark and HK Solutions.

Vale

The Foundation acknowledges the passing of Peter Fyfe. Peter served the Foundation as a Board Member from 1974 - 1983 in addition to being a member of the Marketing Committee. Peter was recognised as a Life Member in 1985. We acknowledge Peter's effort and dedication to creating a fairer community.

Loaned Executive team

Bernadette Purton, Nicholson Construction

Chanel Graves, Higher Mark

Claudia Cook, SJ Personnel

Dan Nicolls, Salary Packaging People

David Campbell, LendLease

Georgia Lee, Power in You Project

Hannah Charnock, Arthur St Digital

Hayley Jones, Adriot

Imogen Lyons, WT Partnership

Julia Stanley, Barwon Water

Kristen Gilbert, WT Partnership

Kim Rowe, NDIA

Lauren O'Loughlin, Coulter Legal

Liam Gati, Evologic

Maddie Luppino, Harwood Andrews

Maddy Brown, Evolution Design

Mark Beacham, Prestige Jayco

Molly Perrett, Lyons Construction

Mujahid (MJ) Nayaz, Geelong Advertiser

Paul Codd, Roderick Insurance Brokers

Rachel Drady, GMHBA

Rebecca St Ledger, Bellarine Catchment

Rita Koritas, Jacaranda

Sarah Thomas, SJ Personnel

Sarah Guthrie, Coulter Legal

Sinead Redmond, HK Solutions

Vanda Strange, Viva





THANK YOU!

**Our supporters are helping create
a fairer community**

FOUNDATION PLATINUM PARTNER AWA ALLIANCE
BANK'S GAVIN HEATHCOTE, WITH MEG PRICE
AND DEANNE LINDE FROM BELLARINE LIVING &
LEARNING CENTRE

IMPACT ENABLERS:

Our Supporters

The Give Where You Live Foundation relies on funding to enable our impact activities primarily from the generosity of the wider Geelong community.

The Give Where You Live Foundation brings people, resources and ideas together to support Geelong's most vulnerable people and we do this with the generous assistance of individuals, businesses and other organisations such as government, trusts and foundations.

The Foundation thanks the following partners for their generous financial contributions over the past year.

Trusts and Foundations

These Trusts and Foundations have provided grants in support of the Foundation's work.

- Anthony Costa Foundation
- Percy Baxter Charitable Trust
- The Muffin Foundation
- The Oswald Hearne Trust
- Howard Glover Perpetual Trust
- The Roy O and Constance M Young Trusts*

*The Give Where You Live Foundation is the named beneficiary of the Roy O and Constance M Young Trusts in accordance with the wishes outlined in the Wills of Roy and Constance Young.

Bequests and Named Funds

A Bequest through your Will to the Give Where You Live Foundation is a wonderful way to ensure your legacy continues to care for your community.

The Foundation was the beneficiary of two very generous gifts from wills through the year.

- Thank you to Rainer Naeher who remembered the Foundation generously in his will.
- Thank you to Margaret Henderson who remembered the Foundation generously in her will.

Government

The Foundation acknowledges the support of the Victorian State Government in relation to the GROW (G21 Regional Opportunities for Work) initiative through a funding commitment to the GROW initiative across the state, concluding in June 2023.

Events and Appeal partners



Thanks to our generous supporters the 2023 Give Geelong Appeal raised over \$40,000



Corporate Partners

The Foundation thanks all of our corporate partners for their ongoing support in helping to create a fairer community.

Platinum Partners



Gold Donors



Education Partners



Silver Donors



Bronze Donors



Top 10 Workplace Giving partners

We thank the thousands of individuals from all of the businesses who contribute through our Workplace Giving program each pay.





The Give Where You Live Inc. Board gives freely of its time and contributes a wealth of business and community knowledge and experience. The Board is ultimately responsible for the allocation of funds and the governance of the Foundation.

GIVE WHERE YOU LIVE FOUNDATION BOARD

Chris Davies, Daleene Kroger,
Hugo Le Clerc, Bill Mithen (CEO),
Col Duthie, Lesley Lightfoot,
Tom Molyneux, Jess Dart

Absent: Claire Faulmann,
Libby Mears

GOVERNANCE

GOVERNANCE

Our Board

Board members who served throughout the 2022 - 2023 year:

Col Duthie	Tom Molyneux
Daleene Kroger	Jess Dart
Chris Davies	Hugo Le Clerc
Todd Devine	Claire Faulmann
Lesley Lightfoot	Murray Boyd
Libby Mears	

Board resignations

The Foundation would like to acknowledge the resignations of Murray Boyd and Todd Devine from the board throughout the year and give thanks for their contribution to the Board.

We thank Murray and Todd for their combined 22 years of service to the Foundation.

BOARD MEETING ATTENDANCE 2022/2023

BOARD MEMBER	Col Duthie	Murray Boyd	Daleene Kroger	Todd Devine	Lesley Lightfoot	Chris Davies	Libby Mears	Tom Molyneux	Jess Dart	Hugo Le Clerc	Claire Faulmann
AUGUST 2022	1	1	1	1	1	1	1				
BOARD RETREAT	1	1	1	1	1	1	1				
OCTOBER 2022	1	1	1	1	1	1	1				
ORDINARY MEETING	1	1	1	1	1	1	1				
NOVEMBER 2022	1	1	1	1	1	0	0				
AGM	1	1	0	1	1	1	1				
DECEMBER 2022	1	1	0	1	1	1	1				
ORDINARY MEETING	1	1	0	1	1	1	1				
MARCH 2023	1		1	1	1	1	1	1			
ORDINARY MEETING PART A	1		1	1	1	1	1	1			
MARCH 2023	1		1	0	0	1	0	1			
ORDINARY MEETING PART B	1		1	0	0	1	0	1			
JUNE 2023	1		1	1	1	1	0	0	1	1	1
ORDINARY MEETING	1		1	1	1	1	0	0	1	1	1
NUMBER ATTENDED	7	4	6	6	6	6	4	2	1	1	1
ELIGIBLE TO ATTEND	7	4	7	7	7	7	7	3	1	1	1

BOARD MEMBER APPOINTMENT DATES

SURNAME	FIRST NAME	CURRENT POSITION	APPOINTED
Duthie	Col	Chairperson	February 2018
Kroger	Daleene	Deputy Chairperson	February 2014
Lightfoot	Lesley	Board Member	February 2022
Davies	Chris	Treasurer	June 2022
Mears	Libby	Board Member	August 2022
Molyneux	Tom	Board Member	March 2023
Dart	Jess	Board Member	June 2023
Le Clerc	Hugo	Board Member	June 2023
Faulmann	Claire	Board Member	June 2023

GOVERNANCE

Our Team

People and organisation capacity

The Foundation recognises that if we are to achieve our goals and mission, we must continue to invest in our people and organisation.

Over the year the Foundation continued to increase the organisation capacity, knowledge and experience.

At the end of the year the Foundation employed a team of 17 people.

Participation in Social Impact Leadership Australia Program

In July 2022, CEO Bill Mithen was selected as one of 24 not-for-profit leaders from Victoria and Tasmania to participate in the second cohort of the Social Impact Leadership Australia (SILA) Program.

During the program Bill and the other leaders participated in a series of immersive learning experiences, one-on-one coaching, dedicated capacity-building support, and a fully funded three-month sabbatical over the 10-month program.



Participation in the program was also transformative for the Foundation, who received capacity funding and executive support through an identified 'Step-up Leader'. During Bill's three-month sabbatical, Meg Price stepped up to lead the Foundation as Acting CEO from February until May 2023.

Our people are the Foundation's most important asset.



Photo Jane Fitzgerald Photography

THE GIVE WHERE YOU LIVE FOUNDATION TEAM WITH CORRINA ECCLES AND NOVA PERIS AT THE 2023 CONVERSATIONS THAT MATTER EVENT

FINANCIAL REPORTS 2022-2023

THE FINANCIAL REPORTS OF THE GIVE WHERE YOU LIVE FOUNDATION FOR THE YEAR 2022 - 2023 ARE PRESENTED OVER THE FOLLOWING PAGES. THE FOUNDATION WOULD LIKE TO SINCERELY THANK ALL THOSE WHO HAVE MADE PERSONAL DONATIONS TO THE FOUNDATION, INCLUDING THE THOUSANDS OF INDIVIDUAL WORKPLACE GIVERS AND REGULAR COMMITTED GIVERS. THOSE WHO HAVE DONATED TO ONE OF OUR FOUR APPEALS, HAVE MADE A ONCE OFF DONATION OR HAVE ATTENDED ONE OF OUR FUNDRAISING EVENTS.

STATEMENT OF COMPREHENSIVE INCOME

For the year ended 30 June 2023

	NOTE	2023 \$	2022 \$
REVENUE			
Trusts, foundations & grants		956,067	921,571
Workplace Giving		482,010	544,366
Corporates		439,259	593,679
Campaigns & appeals		623,256	533,841
Events		465,913	304,831
Government grants		631,206	847,896
Interest & dividends		67,463	41,263
Bequests & other income		66,008	197,639
Net change in fair value of investments		142,542	(200,891)
TOTAL REVENUE		3,873,724	3,784,195
EXPENSES			
GROW initiative		(706,770)	(528,528)
Community grants		(1,322,276)	(1,394,777)
WorkWell Learning Network		-	(211,040)
Community development & grant making		(464,406)	(436,839)
Total Community Contribution		(2,493,452)	(2,571,184)
Marketing, Fundraising & Events		(713,517)	(539,050)
Administration		(766,421)	(619,475)
TOTAL EXPENSES		(3,973,390)	(3,729,709)
Partnership grants		(142,999)	(197,546)
Surplus/(Deficit) for the year		(242,665)	(143,060)
Other comprehensive income			
Net change in fair value of land & buildings		-	256,999
TOTAL COMPREHENSIVE INCOME FOR THE YEAR		(242,665)	113,939

STATEMENT OF FINANCIAL POSITION

As at 30 June 2022

	NOTE	2023 \$	2022 \$
ASSETS			
Current Assets			
Cash and cash equivalents	2	873,470	1,286,107
Trade and other receivables	3	170,895	333,931
Prepayments	4	1,050	34,719
TOTAL CURRENT ASSETS		1,045,415	1,654,757
Non-Current Assets			
Financial assets	5	792,142	2,664,601
Fixed assets	6	4,683,757	2,890,343
TOTAL NON-CURRENT ASSETS		5,475,899	5,554,944
TOTAL ASSETS		6,521,314	7,209,701
LIABILITIES			
Current Liabilities			
Trade and other payables	7	432,893	802,812
Loan	8	73,240	60,803
Provisions	9	449,964	410,143
TOTAL CURRENT LIABILITIES		956,097	1,273,758
Non-Current Liabilities			
Loan	8	385,061	507,776
Provisions	9	2,399	7,743
TOTAL NON-CURRENT LIABILITIES		387,460	515,519
TOTAL LIABILITIES		1,343,557	1,789,277
NET ASSETS		5,177,757	5,420,424
EQUITY			
Retained earnings		4,499,627	4,742,292
Reserves	10		
Asset Revaluation Reserve		256,997	256,999
I Woolnough Fund		212,115	212,115
Deakin Community Child Care Fund		63,714	63,714
Ford Workers Fund		29,307	29,307
Ford Australia Fund		115,997	115,997
TOTAL EQUITY		5,177,757	5,420,424

STATEMENT OF CHANGES IN EQUITY

For the year ended 30 June 2023

30 June 2023

	NOTE	Retained Earnings \$	Asset Revaluation \$	I Woolnough Fund \$	Deakin Community Child Care Fund \$	Ford Workers Fund \$	Ford Australia Fund \$	Total \$
Balance at 1 July 2023		4,742,292	256,999	212,115	63,714	29,307	115,997	5,420,424
New Surplus/(Deficit) for the year		(242,665)	(2)	-	-	-	-	(242,667)
Asset Revaluation		-	-	-	-	-	-	-
Balance at 30 June 2023		4,499,627	256,997	212,115	63,714	29,307	115,997	5,177,757

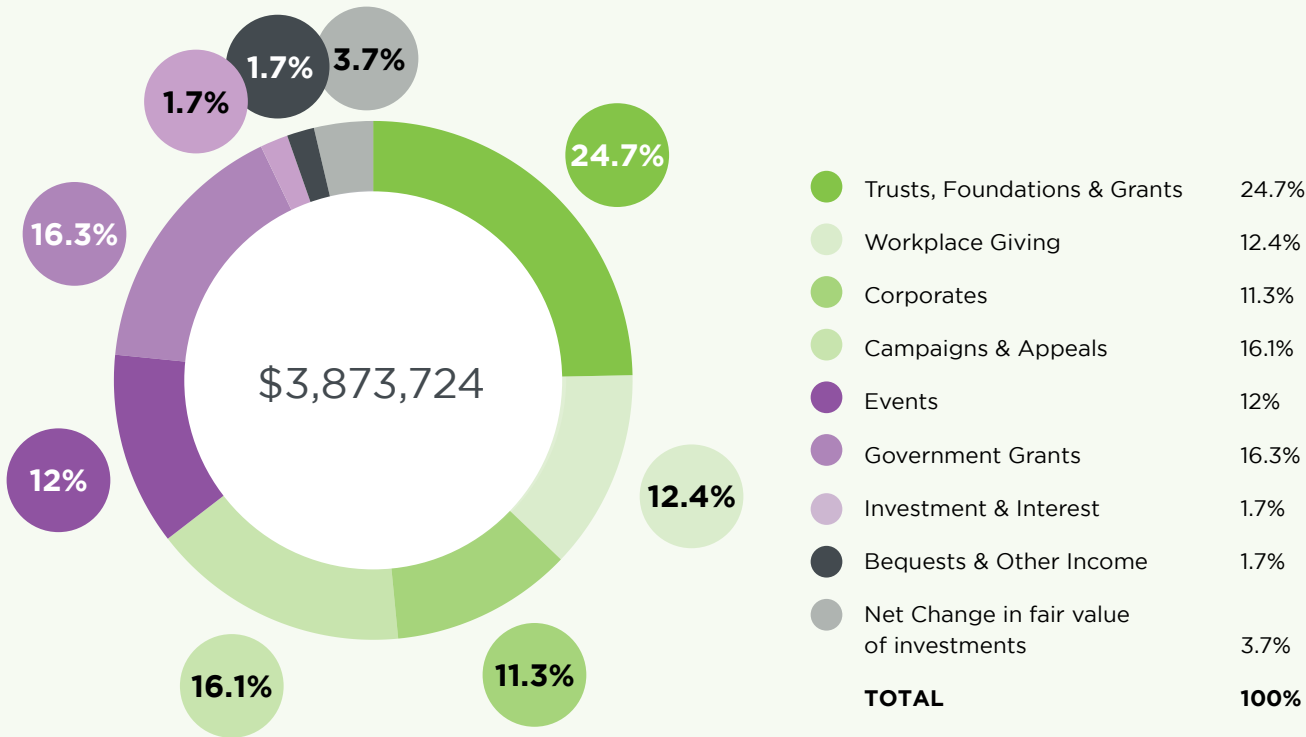
30 June 2022

	NOTE	Retained Earnings \$	Asset Revaluation \$	I Woolnough Fund \$	Deakin Community Child Care Fund \$	Ford Workers Fund \$	Ford Australia Fund \$	Total \$
Balance at 1 July 2021		4,885,352	-	212,115	63,714	29,307	115,997	5,306,485
Total comprehensive income for the year		(143,060)	-	-	-	-	-	(143,060)
Transfer to Reserves	10	-	256,999	-	-	-	-	256,999
Balance at 30 June 2022		4,742,292	256,999	212,115	63,714	29,307	115,997	5,420,424

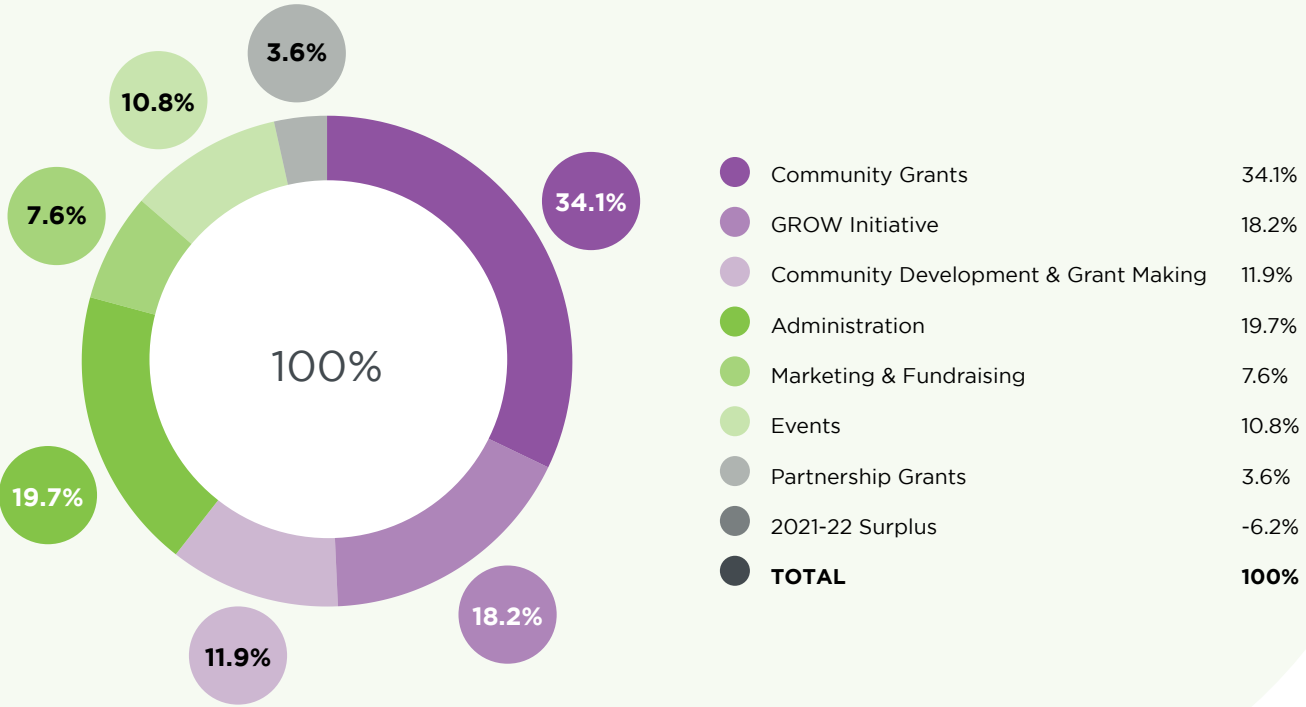
STATEMENT OF CASH FLOWS
For the year ended 30 June 2023

	NOTE	2023 \$	2022 \$
CASH FROM OPERATING ACTIVITIES:			
Receipts from donors, bequests and other activities		3,807,871	3,707,880
Payments to community partners, employees and suppliers		(4,330,949)	(4,582,822)
Net cash provided by (used in) operating activities	11	(523,078)	(874,942)
CASH FLOWS FROM INVESTING ACTIVITIES:			
Interest received		24	79
Dividends received		46,921	20,525
Payments for investments		2,015,000	-
Proceeds from sale of property, plant and equipment		39,403	-
Purchase of property, plant and equipment		(1,877,807)	(30,686)
Net cash used by investing activities		223,541	(10,082)
CASH FLOWS FROM FINANCING ACTIVITIES:			
Proceeds from loan		-	-
Payment of loan		(113,100)	(60,803)
Net cash provided by (used in) operating activities		(113,100)	(60,803)
Net increase (decrease) in cash and cash equivalents held		(412,637)	(945,827)
Cash and cash equivalents at beginning of year		1,286,107	2,231,934
CASH AND CASH EQUIVALENTS AT END OF FINANCIAL YEAR	2	873,470	1,286,107

2022-23 TOTAL INCOME
(including investments)



2022-23 ALLOCATION OF INCOME



Platinum Partners



Gold Donors



Education Partner



Silver Donors



Bronze Donors



Trusts and Foundations

- Anthony Costa Foundation
- Percy Baxter Charitable Trust
- The Muffin Foundation
- The Oswald Hearne Trust
- Howard Glover Perpetual Trust
- The Roy O and Constance M Young Trust

THANK YOU

For helping us create
a fairer community!



SCAN TO DONATE

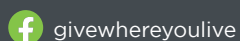


GIVE WHERE YOU LIVE FOUNDATION

21-23 Fenwick Street, Geelong Vic 3220

givewhereyoulive.com.au

Keep up to date with the Give Where You Live Foundation



[givewhereyoulive](https://www.facebook.com/givewhereyoulive)



[givegeelong](https://twitter.com/givegeelong)



[givegeelong](https://www.instagram.com/givegeelong)



[Give Where You Live Foundation](https://www.linkedin.com/company/Give-Where-You-Live-Foundation)